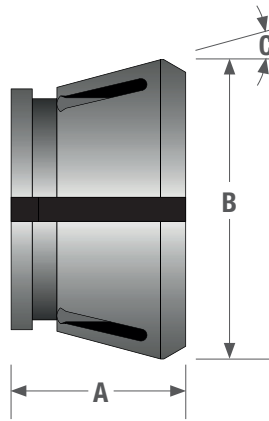
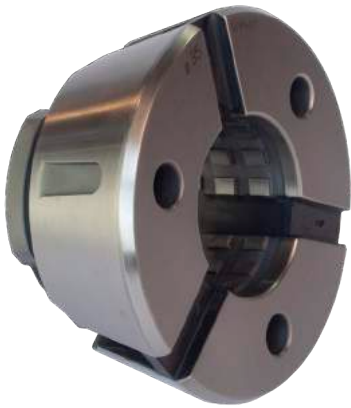


## DC Quick Change Collets to Suit DHP42 Collet Chucks



### DC42 Varibore Collets

- Round, Hexagon, Square or Emergency types available
- Please specify which gripping surface you require – Serrated or Smooth
- Clamping tolerance of +/- 0.5mm
- Counter boring and special profile shapes are available upon request

### Dimensions (Metric)

Part No.	A	B	C
DC42	42	79.3	15°

### DC42 Round Collets

Nominal Gripping Diameter	Serrated Part Number	Smooth Part Number
4mm	DC42-R04	DC42S-R04
5mm	DC42-R05	DC42S-R05
6mm	DC42-R06	DC42S-R06
7mm	DC42-R07	DC42S-R07
8mm	DC42-R08	DC42S-R08
9mm	DC42-R09	DC42S-R09
10mm	DC42-R10	DC42S-R10
11mm	DC42-R11	DC42S-R11
12mm	DC42-R12	DC42S-R12
13mm	DC42-R13	DC42S-R13
14mm	DC42-R14	DC42S-R14
15mm	DC42-R15	DC42S-R15
16mm	DC42-R16	DC42S-R16

Nominal Gripping Diameter	Serrated Part Number	Smooth Part Number
17mm	DC42-R17	DC42S-R17
18mm	DC42-R18	DC42S-R18
19mm	DC42-R19	DC42S-R19
20mm	DC42-R20	DC42S-R20
21mm	DC42-R21	DC42S-R21
22mm	DC42-R22	DC42S-R22
23mm	DC42-R23	DC42S-R23
24mm	DC42-R24	DC42S-R24
25mm	DC42-R25	DC42S-R25
26mm	DC42-R26	DC42S-R26
27mm	DC42-R27	DC42S-R27
28mm	DC42-R28	DC42S-R28
29mm	DC42-R29	DC42S-R29

Nominal Gripping Diameter	Serrated Part Number	Smooth Part Number
30mm	DC42-R30	DC42S-R30
31mm	DC42-R31	DC42S-R31
32mm	DC42-R32	DC42S-R32
33mm	DC42-R33	DC42S-R33
34mm	DC42-R34	DC42S-R34
35mm	DC42-R35	DC42S-R35
36mm	DC42-R36	DC42S-R36
37mm	DC42-R37	DC42S-R37
38mm	DC42-R38	DC42S-R38
39mm	DC42-R39	DC42S-R39
40mm	DC42-R40	DC42S-R40
41mm	DC42-R41	DC42S-R41
42mm	DC42-R42	DC42S-R42

### DC42 Hexagon Collets

Available from 7mm to 36mm across flats sides of the hexagon in 1mm increments. Part number is **DC42-X\*\***. Please state which size you require, smooth or serrated gripping surface is available.

### DC42 Square Collets

Available from 7mm to 30mm across flats sides of the square in 1mm increments. Part number is **DC42-S\*\***. Please state which size you require, smooth or serrated gripping surface is available.

### DC42 Emergency Collets

Available only with 5mm, 15mm or 32mm pilot holes. Part number is **DC42-E\*\***. Please state which size you require.